



MORNING PRIDE

**HIGH-PERFORMANCE  
PROTECTION  
FOR FIRST  
RESPONDERS**

# TABLE OF CONTENTS

2.....Table of contents  
3.....Morning Pride® Tails™ - Structural Turnout Gear  
9.....Morning Pride® Viper - Structural Turnout Gear  
11.....Morning Pride® Edge - Structural Turnout Gear  
25.....Morning Pride® Multi-Response Gear  
27.....Morning Pride® Firefighting Helmets  
35.....Pro Series Leather Footwear  
40.....Morning Pride® Leather Boot  
42.....Morning Pride® Hoods





# **MORNING PRIDE<sup>®</sup>** **TAILS<sup>™</sup> - STRUCTURAL** **TURNOUT GEAR**

The TAILS System is the pioneer of safety by design, trusted for state-of-the-art features, versatile customization, and rock-solid protection.

# MORNING PRIDE® TAILS™ SYSTEM



The Morning Pride® TAILS™ system combines advanced pattern engineering with reduced weight to give you a better range of motion, increased protection, and improved ventilation. By strategically reducing excessive overlap at the front of the coat and adding length to the back, the TAILS™ system significantly improves mobility in the front and maximizes protection in the back.

**1. Comfort Chinstraps (optional)**

Curved design for better fit and less irritation

**2. Articulating Drag Rescue Device**

Adjusts to maintain equal leverage on a downed firefighter even when pulling from an angle (patented)

**3. New Shoulder/Arm Pattern**

Increased arm mobility when reaching and more even weight distribution across shoulders

**4. Forward Flex™ Sleeve**

Patented design eliminates undesirable sleeve retraction when reaching up or forward

**5. Continuous 360° Protection**

Outer shell, moisture barrier, and thermal barrier overlap at coat facings, collar linings, and pant fly to give uninterrupted protection

**6. Large Inspection Ports**

Patented feature allows for easier inspection of thermal liner and moisture barrier

**7. Standard snap tab**

Keeps shell and liner aligned

**8. Reshaped Neck/Collar**

Contoured fit for more natural comfort around the neck and across the shoulders

**9. Kinetic Kut™ Styling**

Significantly reduces hem rise and sleeve retraction, allowing for greater range of motion and protection (patented)

**10. Single Seam Sleeves**

Innovative design eliminates second seam, reducing wear point

**11. Waterproof Wristlets**

Double-layer tough and durable Nomex® wristlets with continuous moisture barrier provide a liquid seal at the wrist (patented)

**12. Double Stitched Trim**

Higher durability

**13. Tails™ System**

Reduces weight, increases range of motion and eliminates bunching when bending forward. Also increases visibility from behind and improves torso ventilation

**14. Hybrid Long Tabbed Wristlets**

Durable and comfortable thumb locator option doesn't interfere with glove donning

**15. Low-waist Comfort Pant**

Increases mobility at waist, reduces weight, and allows for more ventilation

**16. New Liner Attachment**

More robust attachment, easier to remove liner from shell

**17. Full Access Fly**

Easier donning and doffing

**18. Full Range of Motion Crotch**

Patented U-shaped design and diamond shaped insert allow greater leg mobility (patented)

**19. Seam Guards**

Placed over trim threads at high-abrasion areas on the coat and pant to reduce wear (patented)

**20. Better Pant/Boot Interface**

Easier to store pants on newer style boots



# MORNING PRIDE<sup>®</sup> TAILS<sup>™</sup> SYSTEM

With extraordinary reliability comes extraordinary performance. The first responder's first choice gets better than ever with rigorous design engineering that increases comfort, fit, and ergonomics for greater mobility and safety.

## WHY FIRST RESPONDERS PREFER THE TAILS SYSTEM

**Protection:** Innovative design features maximize protection and durability.

**Endurance:** Precise fit and advanced patterning reduces reduces physical stress.

**Agility:** Ergonomic design enables unobstructed movement.

**Comfort:** Enhanced ventilation and reduced weight improve wearability.

## DESIGNED BY SCIENCE. ENGINEERED WITH PRIDE.

The Morning Pride<sup>®</sup> TAILS system has been designed to reinforce every move you make with protection, support, and performance while maintaining all the great features that make it Morning Pride. Our groundbreaking classic design has been further perfected by 50 years of pattern-engineering expertise for turnout gear that protects you with better fit, better weight distribution, and greater range of motion. The result: the comfort you want. The agility you need. And the safety you depend on. It's the science of precise design – and it's precisely why Morning Pride<sup>®</sup> TAILS is the first choice of first responders.



# MORNING PRIDE® TAILS PRO FIT PANT

Morning Pride quality with a modern and stress-free fit

Take comfort to the next level with our new Morning Pride® Pro Fit Pant. This new design combines the best of both worlds – the tailored professional fit you have come to expect from Morning Pride, along with improved mobility through a more modern fit. It's still a Morning Pride pant, so you can trust the high quality and durability, and of course find a rich selection of optional features.

The innovation on the Pro Fit pant isn't just that we lowered the front to sit at the hips, for the most preferred fit today. We also realigned the rest of the pant for a less bulky crotch, a properly aligned knee position that eliminates knee roll, and reduced cuff retraction. You'll feel the difference in the ease of movement, eliminating stress and making your job easier.

The Morning Pride Pro Fit is available in all fabric composites, with most options offered in the current Morning Pride TAILS line. The base garment comes standard with the following:

- Kevlar®-lined bellows pockets with 3:1 hook and pile, and easy grip
- Half-angle cuffs with Ara-shield® trim
- Narrow fly with hook and pile, and reverse hook on tab
- Take-up straps

NFPA 1971 certified

Model: MPL

**1. Lower waist in front**  
while keeping enough coverage in the back (NEW)

**3. Horizontal seaming**  
to increase flexibility and movement (NEW)

**5. Seam Guard**  
placed over trim threads at high-abrasion areas of pants to reduce wear (patented)

**2. Full range of motion crotch**

**4. Pleated knees**  
added flexibility (NEW)

**6. Reduced cuff retraction (NEW)**



# MORNING PRIDE<sup>®</sup> HARNESSES

## CERTIFIED BELTS AND HARNESSES

UL classified to NFPA 1983, current edition. Components UL classified to NFPA 1971, current edition.

### Spider™ Harness

Integrated Class II safety and rescue harness with A-frame

- Built in 2" increments for even waist sizes 32" and above
- Compatible with internal or external leg loop configs
- Integrated pant also accepts Patriot Harness and Life Grip Belt
- Extra stable A-frame stows on waist belt for bailout and ladder work
- Separate sliding D-ring on the A-frame for bailout system pre-connect



### Patriot™ Harness

Integrated Class II safety and rescue harness

- Built in 2" increments for even waist sizes 32" and above
- Compatible with internal or external leg loop configurations
- Integrated pant also accepts Spider Harness and Life Grip Belt
- Separate sliding D-ring for bailout system pre-connect
- Optional tether stows at waist for use with ladder hook



### Life Grip™ Ladder/ Escape Belt

Functional and fully adjustable escape belt

- Built in 2" increments for all even-waist-size bunker pants
- The most economical yet fully featured ladder/escape belt
- Separate sliding D-ring for bailout system pre-connect
- Use with integrated pant adaptation or simple belt loops
- Optional tether stows at waist for use with ladder hook



### ATLAS Ladder/ Escape Belt

Functional and fully adjustable escape belt

- Built in 2" increments for all even-waist-size bunker pants
- Extra stable A-frame stows on waist belt for bailout and ladder work
- Separate sliding D-ring for bailout system pre-connect
- Use with integrated pant adaptation or simple belt loops



All Leg Loops, Closure and A-Frame are Intuitively Adjustable.  
All Hardware is in Hot-Forged Alloy Steel for Complete Safety







# **MORNING PRIDE<sup>®</sup>** **VIPER - STRUCTURAL** **TURNOUT GEAR**

Using advanced pattern engineering to improve ergonomics, we were able to significantly reduce fabric bulk while maximizing mobility and thermal insulation.

# MORNING PRIDE® VIPER - STRUCTURAL TURNOUT GEAR

When we set out to create the new generation of turnout gear, our designers searched the global garment industry for ideas that could solve a key design problem: how to make gear that delivers comfort and mobility without adding weight or bulk. We found the answer in skiing, snowboarding, and other high performance sports where the limits of mobility are pushed to the extreme.

## VIPER AT A GLANCE

Available Coat and Pant Closure Systems. All paired with hook and loop

- Zipper under flap
- Hooks and dees outside flap
- Hooks and dees inside flap

### 1. Integrated Collar and Storm Flap T-Closer™

Eliminates the gap found in so many other throat strap and collar designs (patented)

### 2. Unique Ergonomic Shoulder and Underarm Design

Increases venting.  
Eliminates the gusset for less bunching under the arm, increasing comfort.  
Minimizes coat rise.

### 3. Bar-tack Reinforced Stress Points

For enhanced durability

### 4. Sidewinder™ Coat Pockets

Many other pocket types available as options – all sewn below the waist to avoid overlap with SCBA straps (graded size) (patent pending)

### 5. SteamGard™ Wrist Trim

Helps reduce the risk of compression burns and complies with the new SET requirement of NFPA 1971

### 6. Side Adjustment Pull-tabs in Tough and Durable Nomex® Webbing

Waist adjustment of 4" to 6" provides a better, tailored fit

### 7. Lo-rise Front, Hi-rise Back Pant

Maximizes mobility and flexibility

### 8. Full-bellows Pockets (10" x 10")

For large capacity

### 9. Kevlar® Reinforced Pockets

Maximized durability

### 10. Oversize Knee Reinforcements

Cover the knee both standing and kneeling

### 11. Ergonomic Legs

2 front panels divided at the knee. The lower front panel is convex at the knee for better mobility and fit in all positions

### 12. Choice of Knee and Cuff Reinforcements

Matching your specification needs

### 13. Neoprene-lined Anti-wicking Pant Bottoms

Protect against water wicking up





# **MORNING PRIDE<sup>®</sup>** **EDGE - STRUCTURAL** **TURNOUT GEAR**

Created for the firefighter who wants the latest technology, yet wishes to keep a traditional cut. Proven and versatile in many firefighting environments, EDGE delivers the high level of performance you need to depend on.

# EDGE AT A GLANCE

## Flex-back Pleats

Allow better movement and reach

## Underarm Gussets in All Three Layers

- Maximize comfort
- Minimize coat rise

## Full-bellows Coat Pockets (9" x 9")

For ample capacity

## Side Adjustment Pull-tabs in Tough and Durable Nomex® Webbing

Waist adjustment of 4" to 6" provides a better, more tailored fit

## Full-bellows Pant Pocket (10" x 10")

For ample capacity

## Offset Seams Between Each Layer Reduce Abrasion

Seams on all three layers are offset to prevent abrasion and increase comfort

## Available Coat And Pant Closure Systems

All paired with hook and loop:

- Zipper under flap
- Hooks and dees inside flap



## Stand-up Collar and Linkable Throat Tab

Allow fast donning

## Bar-tack Reinforced Stress Points

For maximum durability

## Ergonomically Curved Two-piece Arm Design

Follows the line of the arm for effortless movement

## Full-cut Body Design

For great all-around comfort

## Uninterrupted Zip-in Liner

- Eliminates gaps in thermal protection
- Prevents detachment of liner
- Is easily removed for washing or decontamination

## Button Suspenders

## Internal Adjustable Belt System

- Offers flexible adjustability without bulk
- Allows waist size to adjust up to 4"
- Does not interfere with an SCBA belt

## Uninterrupted Zip-in Liner

- Eliminates gaps in thermal protection
- Prevents detachment of liner
- Is easily removable for washing or decontamination

## Choice of Oversized Knee and Cuff Reinforcements

Customizable to your needs, for enhanced protection



DuPont™  
**Nomex** | DuPont™  
**Kevlar**®

DuPont™ Nomex® and Kevlar® are trademarks or registered trademarks of E.I. du Pont de Nemours and Company.

# INNOVATIVE FEATURES



## Continuous Zip-in Liner Provides Uninterrupted Protection

Gaps between the outer shell and inner liner can leave a firefighter with only one layer of protection, exposing the wearer to an increased risk of thermal injury.

### ZIP-IN LINER FEATURES

- Eliminates gaps in thermal protection
- Prevents detachment of liner
- Easily removed for washing or decontamination
- Liner overlap design delivers enhanced comfort

DuPont™  
**Kevlar®**

*DuPont™ and Kevlar® are trademarks or registered trademarks of E.I. du Pont de Nemours and Company.*



## In-collar DRD™ Design Allows Easy Access Even with a Gloved Hand

Designed to aid in the rescue of an incapacitated or injured wearer, the Drag Rescue Device (DRD) is a critical safety component of any turnout jacket. EDGE offers the only in-collar DRD on the market. This proprietary design places the DRD access port in the collar instead of further down the back of the jacket, ensuring clear visibility and easy access – even when the downed firefighter wears a breathing apparatus.

### IN-COLLAR DRD FEATURES

- Reflective lettering for high visibility in low light conditions
- Flexible Kevlar® webbing for strength and comfort
- Unique, non-removable design prevents loss and improper installation
- Performance exceeds 2X NFPA 1971



## Articulating DRD Designed to Evenly Distribute the Weight

The Morning Pride® patented Articulating Drag Rescue Device is unlike any other DRD on the market.

The articulating nature of this design means that both underarms are engaged when the rescuer must pull from an angle. In contrast, non-articulating designs will only pull on both underarm areas if the rescuer can make a straight pull. Engaging both sides of the downed firefighter should help minimize the chance of pulling the coat off or failing to gain effective leverage on the individual.





100% Spun  
Nomex Knit

### TES™ (Thermal Enhancement System) Creates Extra Thermal Protection Without Adding Bulk

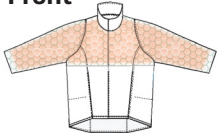
The TES™ (thermal enhancement system) design dramatically increases TPP (thermal protective performance) with no significant impact on THL (total heat loss). This means extra protection without added bulk.

TES™ consists of a layer of Nomex® mesh engineered into the garment design on the upper torso and arms –all areas typically exposed to compression and the highest thermal load.

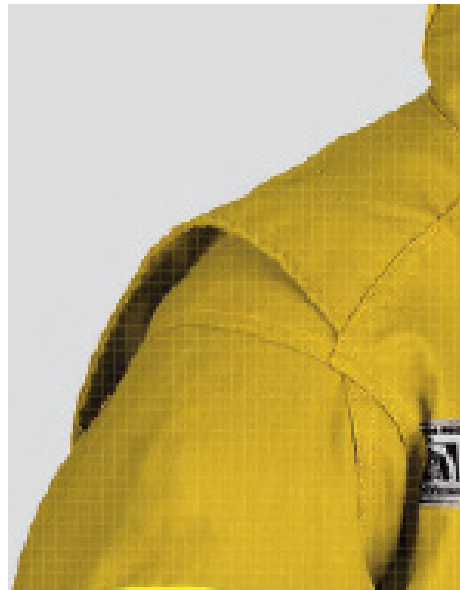
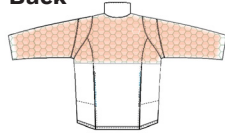
#### TES™ Advantages

- Superior protection of the entire upper torso and arms when compared to other thermal enhancement systems
- Increased thermal protection with no significant impact on THL

Front



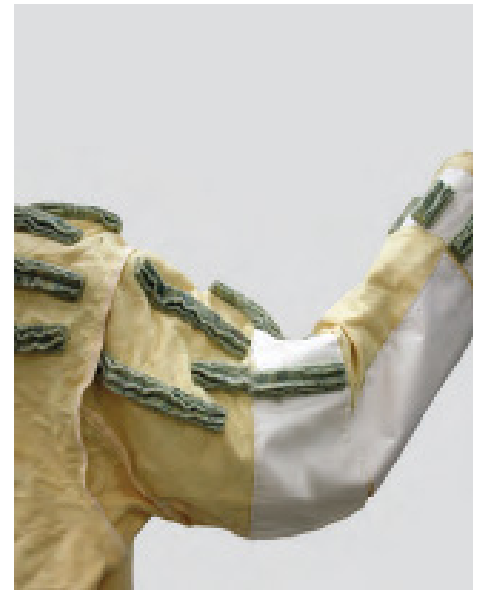
Back



### Flex-back Pleats Allow Maximum Movement and Reach

Dynamic Flex-back Pleat was designed to allow the sleeve to expand freely in order to increase the reach and movement in the arms without adding fabric bulk. This construction is replicated in the thermal liner and moisture barrier, thus fully optimizing the Flex-Back design benefits.

In addition to the Dynamic Flex-Back Pleat, EDGE features underarm gussets in all three layers, offering optimal comfort and minimum coat rise. A perfect fit!



### Dead Air Panels Provide Lightweight, Non-restrictive Insulation

Using X-9 engineered thermal padding, dead air panels, found only in Morning Pride® garments, increases conductive compressive heat resistance (CCHR) in critical areas significantly higher than the NFPA standard. No other system combines such results with a light-weight, highly vapor-permeable design, and the low cost found in Morning Pride® dead air panels.

**MORE THAN 2X THE NFPA  
MINIMUM PROTECTION  
REQUIREMENT**



### Hybrid Wristlet Increases Comfort and Dexterity of the Hand

The hybrid wristlet helps create additional comfort for the firefighter and will not get in the way of movement. This wristlet is attached to the waterwell that is then attached to the outer shell.

Thanks to this design, exclusive to Morning Pride® EDGE gear, you won't have to worry about contaminated water running down your sleeves from your waterwells when you raise your arms. You stay safe and dry!



### Dyna-Fit "Rig Friendly" Removeable Suspenders Hold Pants Securely

These patented suspenders have no mid-back hardware and comfortably stay in place because of an interplay of the suspender loops. They feature rig-friendly snap attachments (instead of buttons) preventing suspender rotation when the pants are being donned.



### Internal Adjustable Belt System Improves Comfort and Adjustability

What is the most inconvenient part of a belt on your turnout gear pants? For many, it's the buckle: it can be bulky, it doesn't offer the adjustability you're looking for and often enough it's uncomfortable when moving.

Morning Pride® EDGE offers a unique Internal Adjustable Belt System that integrates an elasticized belt in the back of the pants, between the thermal liner and the outer shell. The belt is secured with loops and allows you to adjust your waist size up to 4 inches. The best part...it's comfortable, expandable and removable. With the Internal Adjustable Belt System, you control the fit of your waist.

# HIGH-PERFORMANCE OPTIONAL FEATURES

Certified belts and harnesses:

UL classified to NFPA 1983, current edition

Components UL classified to NFPA 1971, current edition



*Shown with external leg loops*

*Shown with internal leg loops*

## **SPIDER™ HARNES**

**Integrated Class II safety and rescue harness with A-frame**

- Built-in two-inch increments for even waist sizes 32-inch and above
- Compatible with internal or external leg loop configurations
- Integrated pant also accepts Patriot Harness and Life Grip Belt
- Extra stable A-frame stows on waist belt for bailout and ladder work
- Separate sliding D-ring on the A-frame for bailout system pre-connect

## **PATRIOT™ HARNES**

**Integrated Class II safety and rescue harness**

- Built-in two-inch increments for even waist sizes 32-inch and above
- Compatible with internal or external leg loop configurations
- Integrated pant also accepts Spider Harness and Life Grip Belt
- Separate sliding D-ring for bailout system pre-connect
- Optional tether stows at waist for use with ladder hook

## **LIFE GRIP™ LADDER/ESCAPE BELT**

**Functional and fully adjustable escape belt**

- Built-in two-inch increments for all even-waist-size bunker pants
- The most economical yet fully featured ladder/escape belt
- Separate sliding D-ring for bailout system pre-connect
- Use with integrated pant adaptation or simple belt loops
- Optional tether stows at waist for use with ladder hook



# INTEGRATED HARNESS AND PANT SYSTEM

Parallel engineered for seamless compatibility.  
Constructed with 100% DuPont Kevlar® webbing and thread.

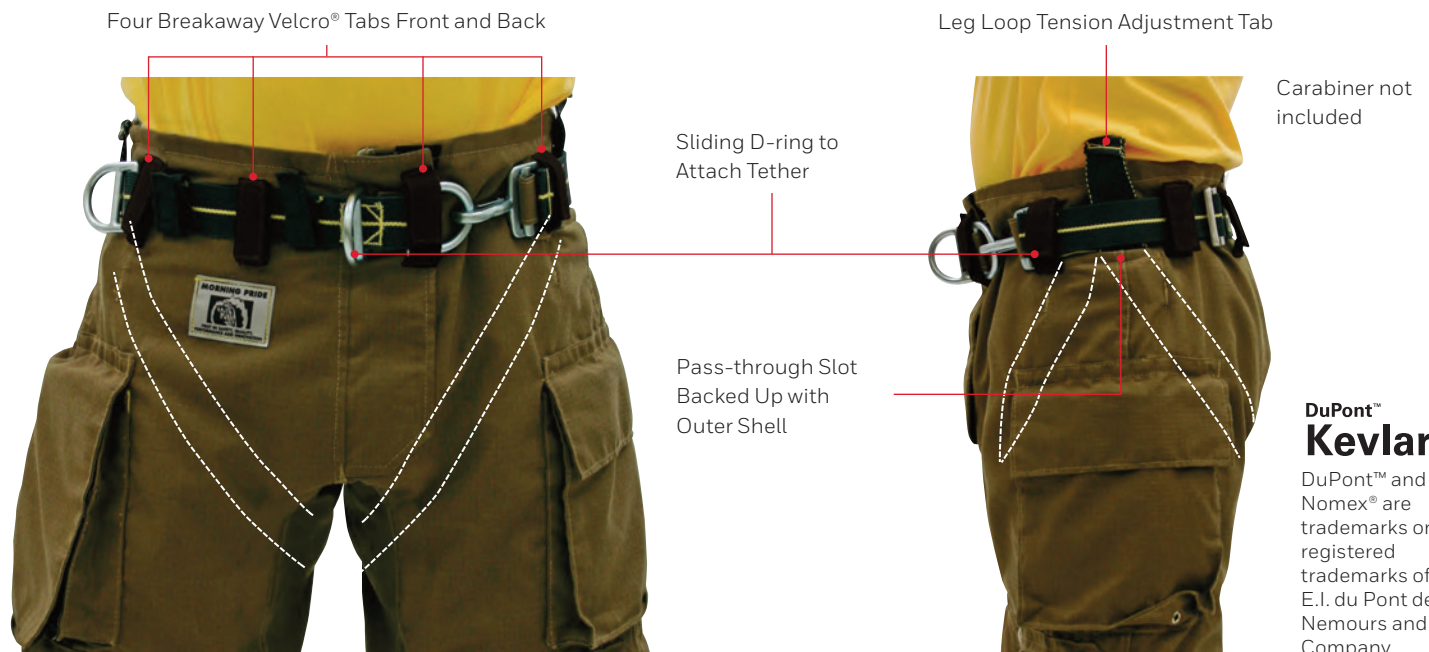
## PANT WITH EXTERNAL LOOPS

Easy to inspect, remove and install (Patriot Harness shown)



## PANT WITH INTERNAL LOOPS

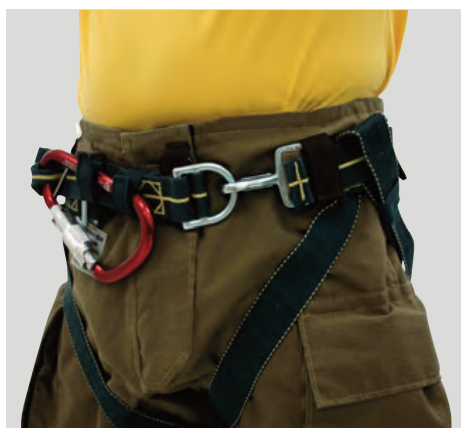
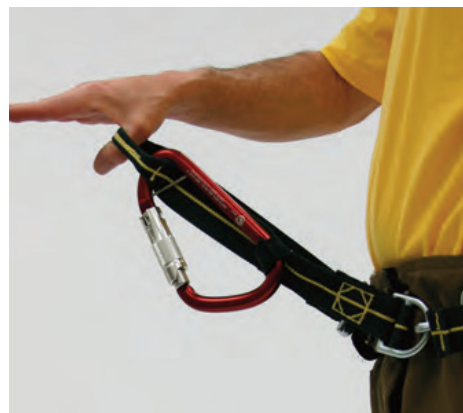
Protected from UV and abrasion (Patriot Harness shown)



**DuPont™ Kevlar®**  
DuPont™ and Nomex® are trademarks or registered trademarks of E.I. du Pont de Nemours and Company.

# DESIGNED TO WORK IN UNISON

All leg loops, closures and A-frames are intuitively adjustable.  
All hardware is in hot-forged alloy steel for complete safety.



## Intuitive Leg Adjustments

- Just grab and pull to tighten
- Thumb the adjuster hardware to loosen (internal or external)

## Integrated Closure

- Simply zip and clip
- Harness closure and pant closure become one
- Donning and doffing are almost unaffected, requiring a short learning curve

## Built-in Spider™ Harness A-frame

- Optional ladder hook stows in A-frame when not in use
- Separate sliding D-ring for escape system pre-connect



### Heat-channel Knee

Enhanced thermal protection in the knee area is critical. The proprietary Heat channel Knee offers three to four times the NFPA minimum level requirement, providing you with maximized thermal and compressive protection, while the unique flexible design offers added comfort and mobility.



### BiFlex Heat-channel Knee

The BiFlex Heat-channel Knee utilizes additional lateral panels for even greater flexibility, maximizing comfort and protection with unparalleled conductive and compressive heat resistance (CCHR). It provides five layers of protection in the primary kneeling area and reduced layering for less centered areas.



### 3D BiFlex Heat-channel Knee

With a combination of concave and convex seams, the 3D BiFlex Heat-channel Knee creates a three-dimensional shape that enhances mobility while making room for removable knee pads. This knee allows fire departments to provide varying levels of protection that are job specific. Waterproof knee pads are available in aramid and moisture barrier or 1/4" silicone foam padding (patent pending).

# OPTIONS COAT

All leg loops, closures and A-frames are intuitively adjustable.  
All hardware is in hot-forged alloy steel for complete safety.

## Wristlets

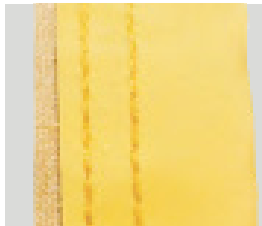


Nomex® knit 3¼" long with neoprene waterwell



Nomex® knit with 6" thumb hole and neoprene waterwell

## Reinforcements



Sleeve cuffs, double stitched



Elbow patches 8" x 6"



Shoulder patches

## Pockets



Semi-bellows pocket 9" x 9"



Pocket reinforced with Kevlar® pouch



Hand warmer pocket 9" x 9" full bellow

## Device Pockets & Accessories



Large radio pocket 9" x 4½" x 2" with antenna port



Small radio pocket 7½" x 3½" x 2" with antenna port



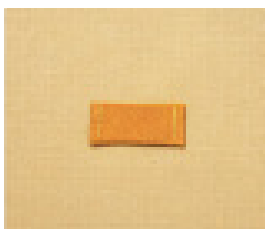
2- or 3-cell flashlight pocket



Inspection port on thermal liner of coat and pant



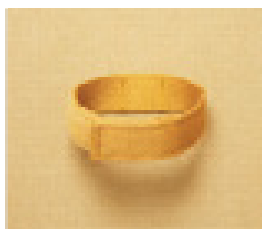
American or Canadian flag



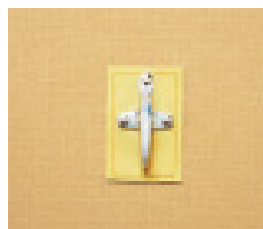
Microphone loop in webbing 1" x 2½"



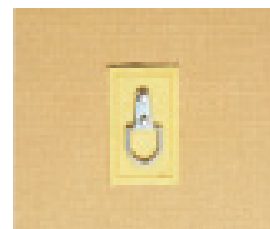
Flashlight loop 2" x 2" with utility strap in webbing 1" x 12"



Glove holder in webbing 1" x 12"



Accessory hook on Hypalon® patch 3" x 2"



Accessory dee on Hypalon® patch 3" x 2"

# OPTIONS PANT

## Suspenders



Removable suspenders, side quick-release buckle



Removable suspenders, New England style

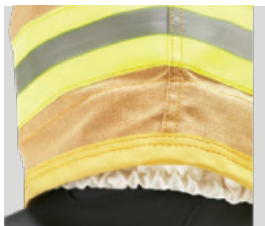


Add 2" 3M™ Scotchlite™ triple trim



Add advanced foam technology padding for suspenders

## Accessories



Waterdams



Knee patches



Reverse boot cut



Angled cuffs

## Thermal Enhancements



Thermal Enhancement System (TES)



Dead air panels



Yoke padding (7" high): extra thermal layer



Knee pads: extra thermal layers



I-Tech Insertable Knee System

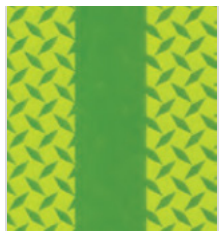
DuPont™  
**Nomex.** | DuPont™  
**Kevlar.**

DuPont™ Nomex® and Kevlar® are trademarks or registered trademarks of E.I. du Pont de Nemours and Company.

# OPTIONS

## TRIM AND LETTERING

### Trim Material



3" two-tone  
Reflexite®  
Brilliance



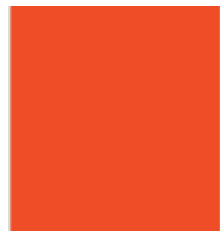
3" and 2"  
Reflexite®  
Brilliance



3" orange  
two-tone 3M™  
Scotchlite™



3" lime  
two-tone 3M™  
Scotchlite™

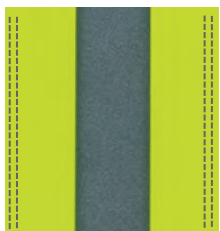


3" and 2" solid  
orange 3M™  
Scotchlite™



3" and 2"  
solid lime 3M™  
Scotchlite™

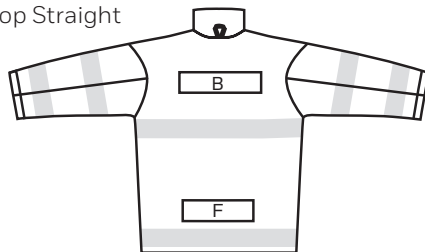
### Trim Stitching



Double stitch on  
reflective trim

### Name Patch Common Positioning

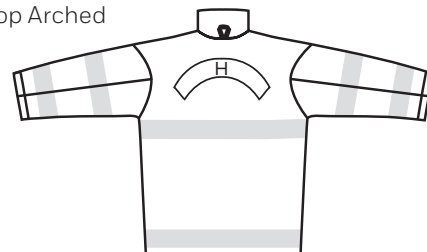
Top Straight



Bottom Straight

F

Top Arched



### Name Patch Common Positioning



Permanent patches: 3 lengths

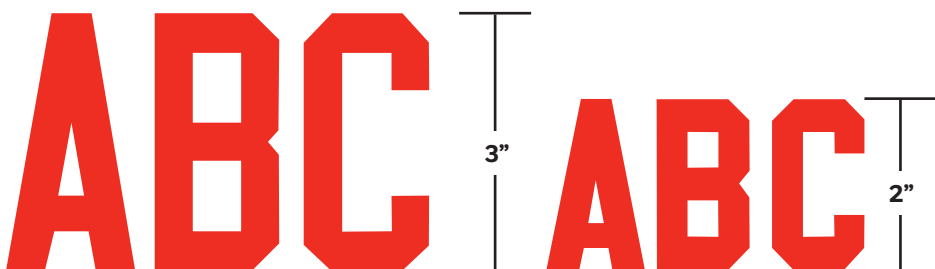


Removable patches: 2 lengths



Hanging name patch 4" x 19"

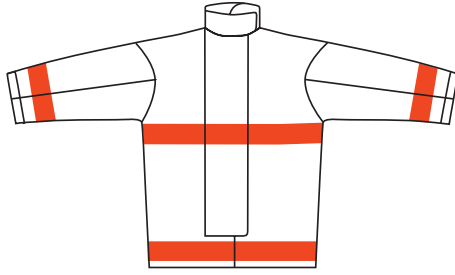
### Lettering



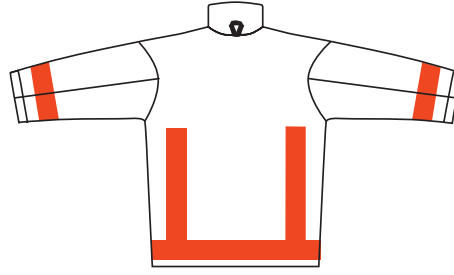
2" or 3" sewn-on 3M™ Scotchlite™ solid orange, lime, or silver.  
2" or 3" heat-set 3M™ Scotchlite™ solid orange or lime. 2" or 3"  
sewn-on Reflexite® solid lime and orange or Reflexite® Brilliance.

## Trim Configurations

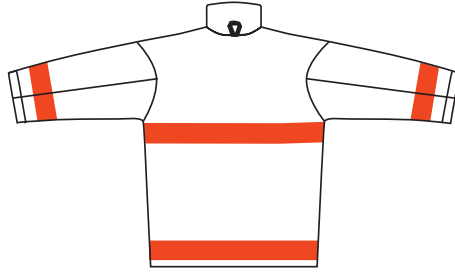
### Standard – 2" or 3"



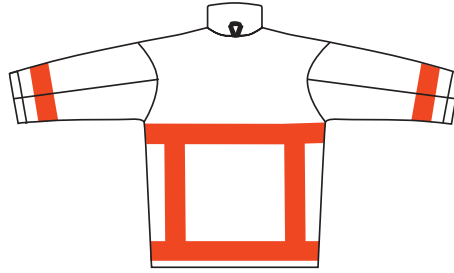
NFPA Standard – Front



NFPA Hi-viz – Back



NFPA Standard – Back



NFPA Combo – Back

### New York – 2" or 3"



New York Standard – Front



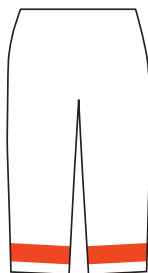
New York Hi-viz – Back



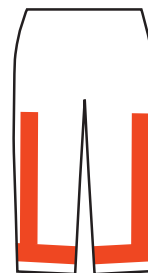
New York Standard – Back



New York Combo – Back



Standard



Hi-viz – Back

# MORNING PRIDE EDGE TURNOUT GEAR NOW UL CERTIFIED

EDGE is made for the firefighter who wants the latest technology, yet wishes to keep a traditional cut. Proven and versatile in harsh environments, EDGE delivers the high level of performance you need to depend on. Advanced design meets classic styling. Designed with ample displacement for all-around mobility, comfort, and performance.







# **MORNING PRIDE<sup>®</sup>** **MULTI-RESPONSE GEAR**

Morning Pride<sup>®</sup> Multi-Response Gear offers protection for a wide variety of scenarios beyond a structural fire call.

# MORNING PRIDE® MULTI-RESPONSE GEAR

Turnout gear (TOG) provides layers of protection to keep firefighters safe when responding to a structural fire event, but when nearly 90% of your calls are not structural, you need the next generation of technical gear.<sup>1</sup>

Many departments are using their high-investment TOG or their stationwear on these emergency medical or search and rescue calls because there is no alternative at their station. Multi-Response Gear was developed to provide firefighters and emergency medical technicians (EMTs) with certified gear that is comfortable and less bulky than TOG, yet maintains quality protection during non-fire calls. Lighter-weight gear means you expend less energy, which lowers your risk of overexertion. Whatever your needs, Multi-Response Gear can be configured to your requirements.

## FIREFIGHTERS INJURIES STATISTICS

- In 2022 the number of firefighter injuries that occurred in the line of duty was 8% higher than in 2021<sup>1</sup>
- In 2022, 33% of all reported firefighter injuries occurred on the fireground<sup>2</sup>



\*Image shown with additional options

## FEATURES AND BENEFITS

### Lightweight

Reduced weight as compared to TOG makes work easier and less stressful on your body.

### Mobility

Engineered to create ease of movement with design features such as a bi-swing back and a contoured waistband.

### Durable

Fabric and construction work together to deliver quality, rugged gear that holds up to all the hazards you face.

### Economical

Invest in a lower-priced garment that won't put wear and tear on your premium TOG.

<sup>1</sup>2NFPA, "United States Firefighter Injuries", Dec 2023, <https://www.nfpa.org/education-and-research/research/nfpa-research/fire-statistical-reports/firefighter-injuries-in-the-united-states>



# **MORNING PRIDE<sup>®</sup>** **FIREFIGHTING** **HELMETS**

Morning Pride<sup>®</sup> helmets are engineered with rugged components that stand up to the test of time, while their unique design and materials provide superior protection and functionality.

# MORNING PRIDE® BEN 4 LOW RIDER PLUS TRADITIONAL



1. Durable Eagle front holder
2. Shell height reduced by 20 mm
3. High density rigid foam inside shell
4. Easily detachable U bracket
5. Velcro attached ear flaps
6. Retractable visor

- Reduced weight and height for improved ergonomics and to reduce fatigue
- Easy to remove inner parts for cleaning.
- Proprietary shell material provides outstanding heat protection with 39% more resistance to impact penetration than conventional fiberglass material
- Precision-engineered with rugged components that stand up to the test of time
- Easy-to-adjust padded headband and suspension components ensure a customized fit and low ride
- Unique design and materials provide excellent protection and functionality
- Easy one-touch retractable and detachable visor



# MORNING PRIDE® BEN 3 LOW RIDER PLUS TRADITIONAL



1. Durable Eagle front holder
2. Shell height reduced by 20 mm
3. High density rigid foam inside shell
4. Easily detachable U bracket
5. Velcro attached ear flaps
6. Light weight EZ flips

- Reduced weight and height for improved ergonomics and to reduce fatigue.
- Easy to remove inner parts for cleaning.
- Proprietary shell material provides outstanding heat protection with 39% more resistance to impact penetration than conventional fiberglass material.
- Precision-engineered with rugged components that stand up to the test of time.
- Easy-to-adjust padded headband and suspension components ensure a customized fit and low ride.
- Unique design and materials provide excellent protection and functionality.



# MORNING PRIDE® BEN 2 LOW RIDER PLUS TRADITIONAL



**1. Durable Eagle Front Holder**

Moves forward and backward to fit any brand/style of front.

**2. High-Performance FYR-Glass Shells**

Strongest shell on the market. Outstanding heat resistance. Proprietary technology.

**3. Bulldog™ Edge Beading**

Rugged and durable.

**4. Large Hang-Up Loop**

Large enough to easily fit over a peg.

**5. Securely Attached Ear Covers**

Tough and durable Nomex® ear covers are easily removed for cleaning.

**6. Reversible 2-Point Quick-Attach Chinstraps**

Tough and durable Nomex chinstraps are easy to switch to right- or left-hand cinch.

**7. Comfortable and Easy to Adjust Suspension**

Cradles your head in comfort.

**8. Protected Suspension Attachments**

Internally located and not affected by external heat or flame.

**9. Built-in Easy Attach Goggle System**

Offers easy attachment for full or 2-strap eyelet goggle.

**10. Certified EZ-Flips™**

NFPA 1971 and ANSI Z87.1+ standards (optional).

**11. Anti-Catch Safety Bracket for Leather Fronts**

Exclusive on our traditional helmets.



# MORNING PRIDE<sup>®</sup> LITE FORCE HELMET



## 1. Two High-Performance FYR-Glass Shells

Strongest shell on the market. Outstanding heat resistance. Proprietary technology.

## 2. Reflective Trim 5 - 25.4 mm x 101.6 mm (1 in x 4 in) Reflexite Lime Bars

## 3. Bulldog Edge Beading

Rugged and durable.

## 4. Large Hang-Up Loop

Large enough to easily fit over a peg.

## 5. Securely Attached Ear Covers

Tough and durable Nomex ear covers are easily removed for cleaning. Available in yellow Nomex 2-layer FR cotton.

## 6. Reversible 2-Point Quick-Attach Postman Slide Chinstrap

Tough and durable Nomex chinstraps easily switched to right- or lefthand cinch.

## 7. Comfortable and Easy to Replace Suspension

Cradles your head in comfort.

## 8. Protected Suspension Attachments

Internally located and not affected by external heat or flame.

## 9. Built-in Goggle Retention System

Goggle-ready and equipped with our unique integrated goggle strap attachment system. No extra retaining parts are required.

## 10. Standard 101.6 mm x 3.81 mm (4 in x 0.15 in) New Generation Faceshield



# MORNING PRIDE<sup>®</sup> PROXIMITY HELMET

NFPA 1971 Certified

## HOW TO BUILD YOUR HELMET

### Step 1: Specify base model

Base model includes FYR-Glass shell, one-piece padded brow comfort cap and ratchet, 6-point suspension with 6 depth adjustments, postman slide chinstrap, 152.4 mm x 3.81 mm (6 in x 0.15 in) new-generation gold-coated faceshield, hang-up loop, and aluminized helmet cover and shroud.

### Step 2: Select required components

- Choose one chinstrap
- Choose one shroud
- Choose one headband ratchet cover



Standard Lite Force Low Rider  
PLUS HT-LF2-PROX



Standard Ben 2 Low Rider  
PLUS HT-BF2-PROX

## REQUIRED COMPONENTS



Standard Nomex postman slide  
and quickrelease chinstrap



Standard shroud



Optional J-Fire shroud

## REQUIRED ACCESSORIES



Optional faceshield cover



One-piece brow comfort cap and ratchet cover



Optional one-piece leather brow  
comfort cap and ratchet cover



WORK



# **PRO SERIES** **LEATHER FOOTWEAR**

For virtually any need that calls you from the station, we have a boot to fit. And every one of our boots is backed by the most rigorous engineering – and a warranty to match.

# PRO NIGHTHAWK BT5555

1. **FR Rubber Shin Guard**  
Ladder protection with cushioned backing for utility and comfort.
2. **Graded Calf Size**  
Shaft opening increases with foot size – eliminates need for expensive wide calf model.
3. **Heavyweight Kevlar®**  
Premium thread to maximize seam strength and durability.
4. **Premium Full-Grain Cowhide Leather**  
Flame-resistant, water-resistant, leather upper; flexible joint transitions for world-class comfort.
5. **PowerToe Protection**  
Our updated innovation for outstanding abrasion-resistant durability.
6. **Oblique Steel Toe Cap**  
A roomy fit without unnecessary bulk.



7. **Leather-Reinforced Nomex® Pull Straps**  
Easy grip, and kind to pants and legs.
8. **CROSSTECH® Footwear Fabric / Cambrelle® Lining**  
Full-height protection and comfort from underfoot to the boot-top line. Waterproof and blood borne pathogen resistant.
9. **Leather Top Binding**  
Always a smooth, finished interface for pants and legs.
10. **Individual Serialized Barcode**  
Departmental NFPA 1851 tracking.
11. **Heel and Ankle Grip System**  
Molded heel counter, contoured, lined, integrated cushion support for outstanding fit and comfort.
12. **Heel Kicker**  
High visibility doffing aid also reduces heel wear.
13. **3M Scotchlite™ Reflective Trim**  
Located below the pant line for maximum benefit. Cleanable and heat resistant.
14. **Triple-Ridge Steel Ladder Shank**  
Provides superb arch and ladder support.
15. **Puncture-Resistant Steel Bottom Plate**  
Exceeds NFPA standard for puncture resistance and offers world-class penetration resistance to sharps.

## Ortholite® Premium X-40 Insert

Developed for athletes and all-day wear applications. High-rebound performance. 3D contoured support. Breathable, moisture-wicking, anti-microbial. Open cell for quicker drying. Machine washable.



## Vibram® FIRE&ICE™ Polymer Technology

FIRE&ICE outsoles have superior traction on icy and oily surfaces. Chemical resistant and performance proven.

## Vibram® Racer Outsole

Beveled heel and notched perimeter lugs to move over uneven terrain with confidence. Omni-directional tread pattern with self-cleaning lugs for great traction.

## Deep Cup Outsole

Premium cement, insensitive to temperature, connects the upper to the outsole. The cup wall depth enhances support and durability of the leather upper while maintaining great flexibility.

# PRO BT5007

## 1. Shin Guard

Ladder protection over large shin area.

## 2. Graded Calf Size

Shaft opening increases with foot size – eliminates need for expensive wide calf model.

## 3. Exclusive Package of CROSSTECH®

Footwear Fabric, Omaha Lining, and Kevlar® Thermal Insulation. Full-height protection and comfort from underfoot to the boot top-line. Waterproof and blood borne pathogen resistant.

## 4. Breathable Advance™ Ripstop Fabric

Lightweight, durable, and flexible.

## 5. Supportive Goodyear Welt Construction

Durable and rugged. Molds to the wearer's foot for long-term comfort.

## 6. Reflective Welt

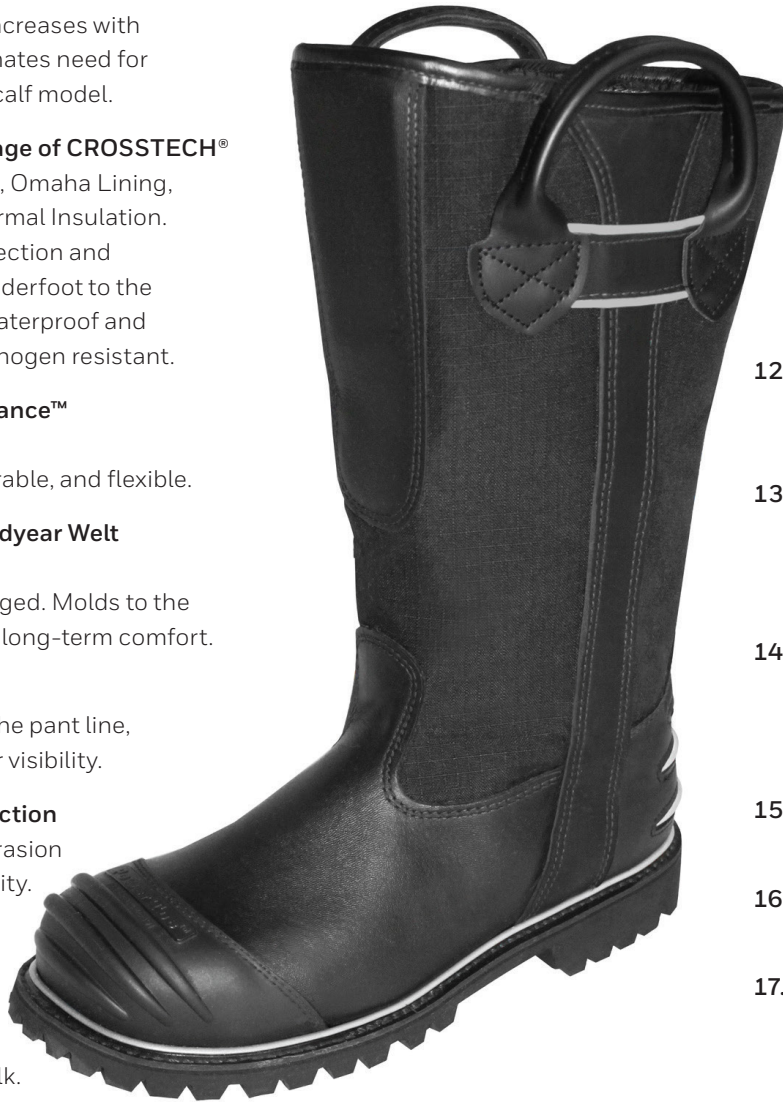
Located below the pant line, aiding firefighter visibility.

## 7. PowerToe Protection

Outstanding abrasion resistant durability.

## 8. Broad Oblique Steel Toe

A roomy fit without unnecessary bulk.



## 9. Leather Top Binding

Always a smooth, finished interface for pants and legs.

## 10. Heavy-Duty Pull Straps

Classic leather & easy to grip. Great stand-up durability.

## 11. Reinforced Side and Back Stays

Heavy-duty waterproof leather ensures the boots will remain upright and retain their shape with bunker pant stacking.

## 12. Individual Serialized

Barcode Departmental NFPA 1851 tracking.

## 13. Premium Full-Grain Cowhide Leather

Flexible, durable, flame resistant and water resistant.

## 14. Heel and Ankle Grip System

Molded heel counter, contoured, lined, integrated cushion support for outstanding fit and comfort.

## 15. Reflective PowerHeel

Heel area protection and doffing aid.

## 16. Triple-Ridge Ladder Shank

For superb arch and ladder support.

## 17. Puncture-Resistant Stainless Steel Bottom Plate

Exceeds NFPA standard for puncture resistance and offers worldclass penetration resistance to sharps.



## Vibram® FIRE&ICE™ Polymer Technology

FIRE&ICE outsoles have superior traction on icy and oily surfaces. Chemical resistant and performance proven.

## Removable Insert

Molded 3D contour for comfort and support. Moisture wicking top layer.

# BT5021B

## Structural Firefighting Boot

### CERTIFICATIONS

- NFPA 1971 Structural
- NFPA 1992 Liquid Splash
- Berry Compliant

### 14" LEATHER PULL ON BUNKER BOOT



- PowerBack driver's cut shaft
- Premium full-grain leather
- Full CROSSTECH® moisture barrier bootie with insulation and Omaha liner
- Large Shin Guard

- FR rubber PowerToe and "Power H" PowerHeel kicker
- Oblique steel toe, ladder shank and composite bottom plate
- Molded heel counter

- Goodyear welt construction
- Vibram® FIRE&ICE™ lug sole
- Removable cushion insert
- Individually barcoded
- Widths: D, E, EEE

Half sizes: 5½ to 15½  
Full sizes: 5 to 16

# 5001B

## Structural Firefighting Boot

### 14" LEATHER PULL ON BUNKER BOOT

1. Premium full-grain leather
2. Full CROSSTECH® moisture barrier bootie with insulation and Omaha liner
3. FR rubber shin guard
4. FR rubber power toe and "Power H" power heel kicker
5. Oblique steel toe, ladder shank and composite bottom plate
6. Radiant barrier layers
7. Molded heel counter
8. Deep Cup outsole-cemented technology
9. Steel ladder shank
10. Vibram® FIRE&ICE™ Polymer Technology
11. Removable cushion insert
12. Individually barcoded
13. Made in the USA

- NFPA 1971 Proximity
- NFPA 1971 Structural
- NFPA 1992 Liquid Splash
- Berry Compliant



Compliant Half sizes: 5½ to 15½  
Full sizes: 5 to 16  
Widths: Medium, Wide, Extra-Wide

# MORNING PRIDE<sup>®</sup> LEATHER BOOT





# BT4020

## Structural Firefighting Boot

### CERTIFICATION:

- NFPA 1971 Structural

### 14" LEATHER PULL ON BUNKER BOOT



- Premium full-grain leather
- Decreased donning time with new rigid shaft
- STEDAIR® REFLEX fabric bootie system
- Leather reinforced 1" boot straps
- SWEN-FLEX® PRO black composite puncture-resistant midsole
- Silver reflective piping

- Impact- and corrosion-resistant epoxy coated steel toe cap
- Ladder shank with triple reinforcement ridges
- Molded heel counter and heel lock system
- Cemented outsole with self-cleaning lugs

- Diamond structure on the sole waist
- FR rubber bumper toe
- Removable cushion insert
- Individually barcoded
- Widths: M, W, XW (each pair comes with two removable shims to customize your width)



# **MORNING PRIDE<sup>®</sup>** **HOODS**

Designed to maximize field of view without compromising an effective and safe overlap between the hood and the edge of any contemporary air mask lens or gasket.

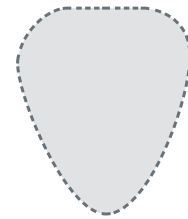
# MORNING PRIDE<sup>®</sup> MASKMATE™ HOOD

The hood design requirements in NFPA 1971 date back to the pre-nose-cup and even the pre-positive-pressure era. Air masks of that time were far more oval or circular in shape, and the hood design requirements reflected that. Since then, air masks have continuously evolved and today are anything but oval or circular. Today's air masks also allow attachments for communication devices and other options. Traditional hood designs can contribute to field-of-view reduction by creating a face opening that often bunches up and is uncomfortably snug around the neck. The MaskMate™ Hood improves the air mask-to-hood interface with an opening that adapts to face, neck, and air mask size and shape.

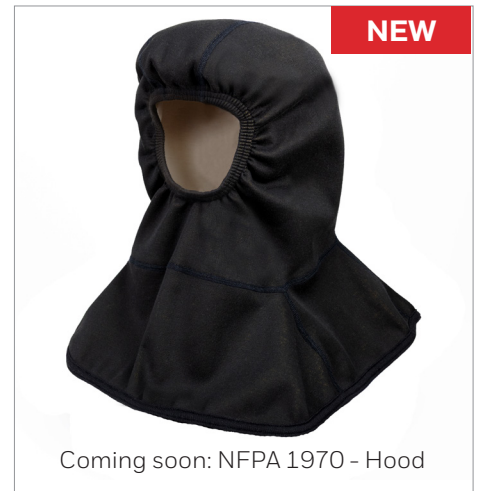
The new design is engineered to maximize field of view without compromising an effective and safe overlap between the hood and the edge of any contemporary air mask lens or gasket. The MaskMate™ Hood also offers maximum comfort while stowed by providing the largest face opening and yet at the same time maintaining its third party certified designation for universal fit to all brands of air masks currently on the market.



TRADITIONAL FACE OPENING DESIGN



MASKMATE™ ADAPTIVE FACE OPENING DESIGN



## 1. Adaptive Design Face Opening

Widest field of view, greatly improved peripheral vision, added size of the face opening allows the hood to be stowed down and around all neck sizes with maximum comfort, effective interface and overlap with edge of air mask lens.

## 2. Unique Differentiated Construction

Easy and faster for Routine and Advanced Inspections, easier to maintain and separate in inventories, easily identifiable when issued and/or in use.

## 3. Comfort Top Pattern (Patented)

Eliminates front to rear seam on peak of head.



DuPont™ and Nomex® are trademarks or registered trademarks of E.I. du Pont de Nemours and Company.

**For more information**

[www.honeywellfirstresponder.com](http://www.honeywellfirstresponder.com)

**For Information on Innovation and Patents**

[hmpats.com](http://hmpats.com)

**Morning Pride First Responder**

#1 Innovation Court

Dayton, Ohio 45414

Tel.: 800-688-6148

[www.honeywell.com](http://www.honeywell.com)

Morning Pride First Responders Brochure | 03/25  
© 2025 Honeywell International Inc.



**MORNING PRIDE**